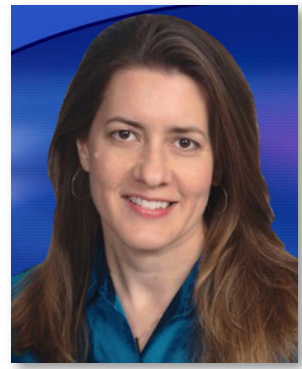


## **Catherine Rentz**

Represented by The NWT Group  
817.987.3600 SariPadorr@NWTgroup.com



### **Links to full stories featured in Quick Look:**

[The 45-minute mystery of Freddie Gray's death](#)

[Coordinated partnership with CNN for long-form broadcast "Who Killed Freddie Gray?"](#)

[Seafood fraud cases plummet as NOAA cuts investigators](#)

[A flawed, inconsistent police approach to sexual assault in Maryland](#)

[New York Times/Immigrants held in solitary cells](#)

[The Digital Campaign-PBS Frontline](#)

[Targeting the Electorate-PBS Frontline](#)

[The Education of Michelle Rhee-PBS Frontline](#)

*Whining Talent*